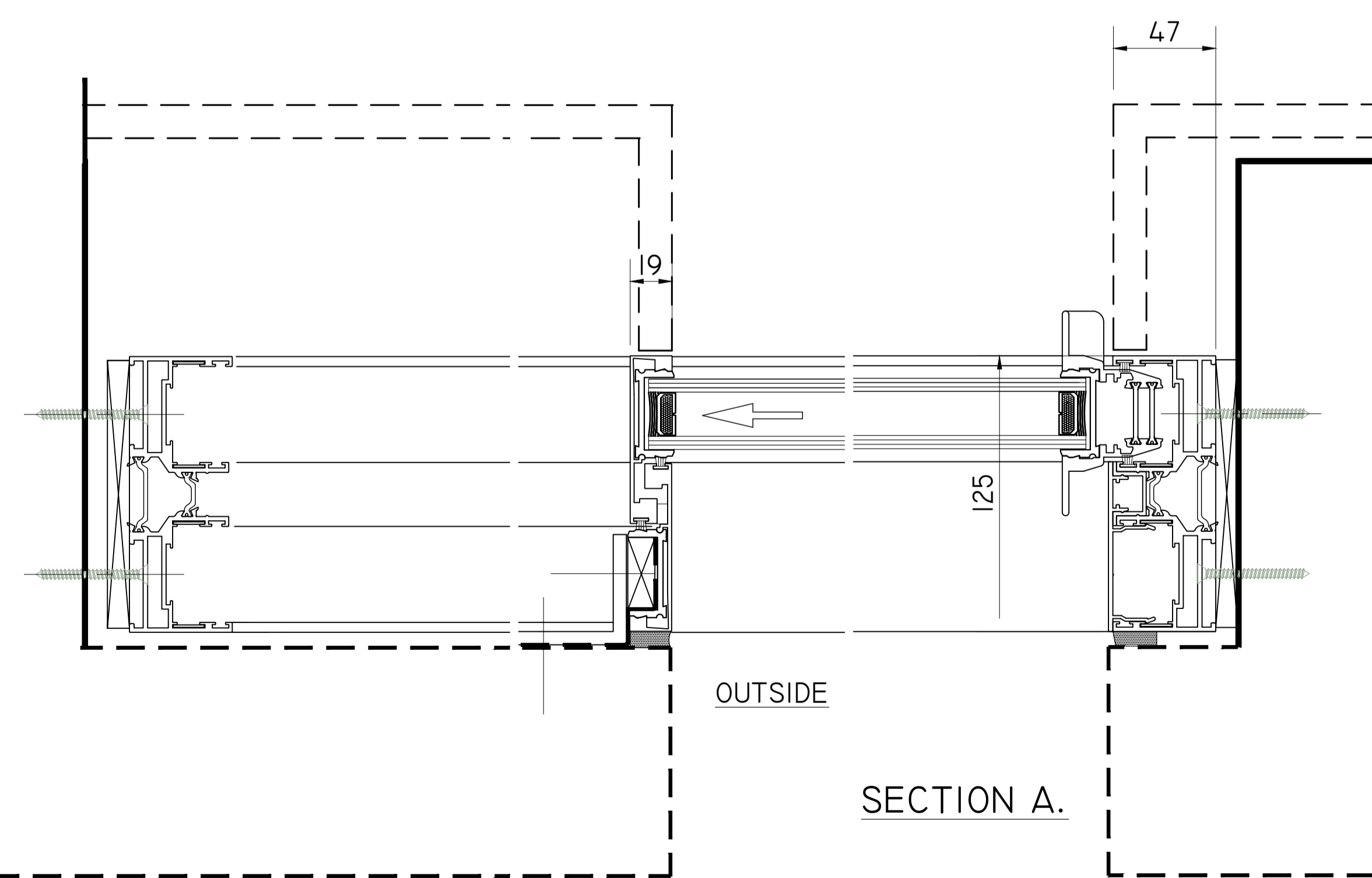
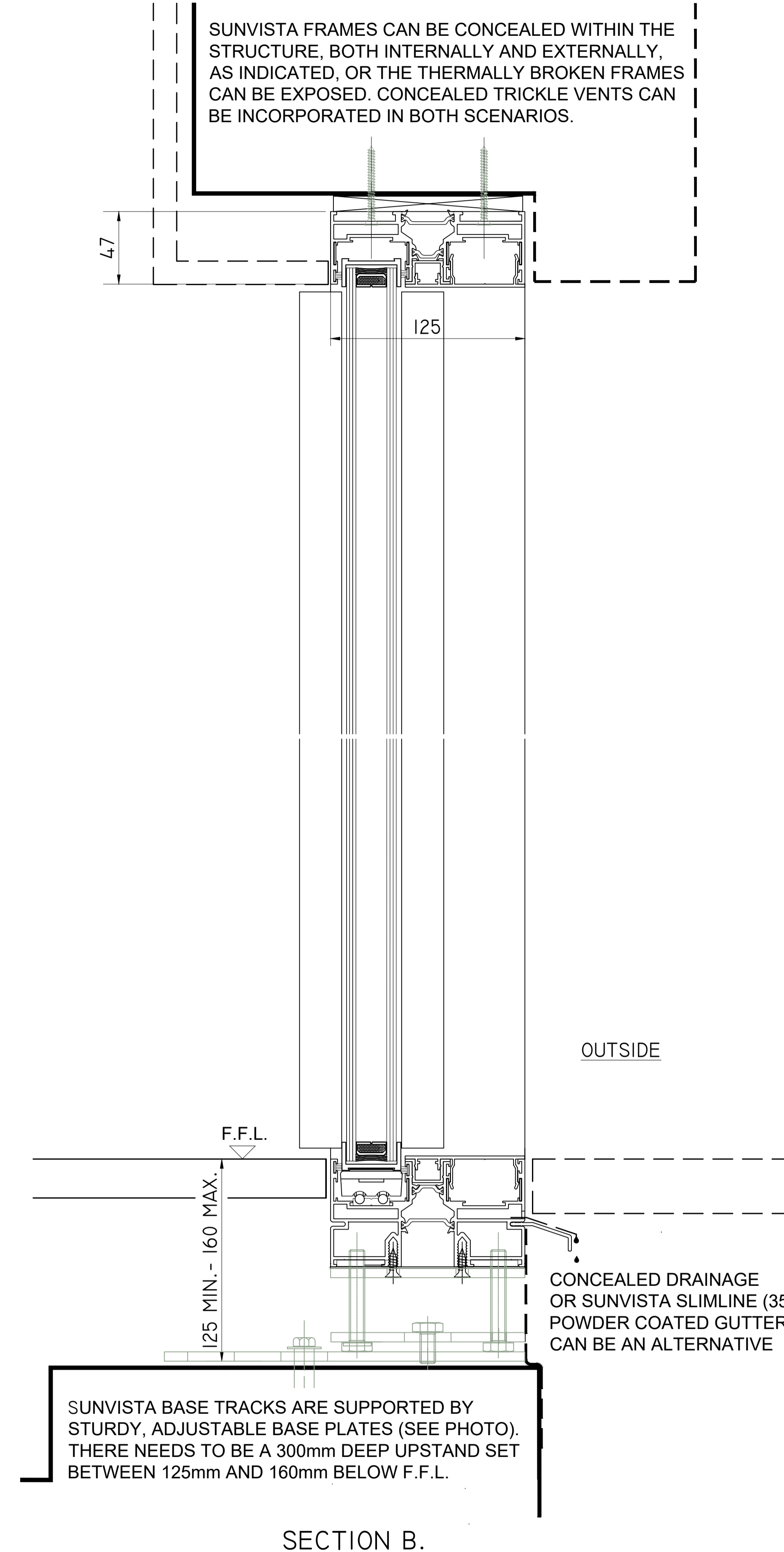
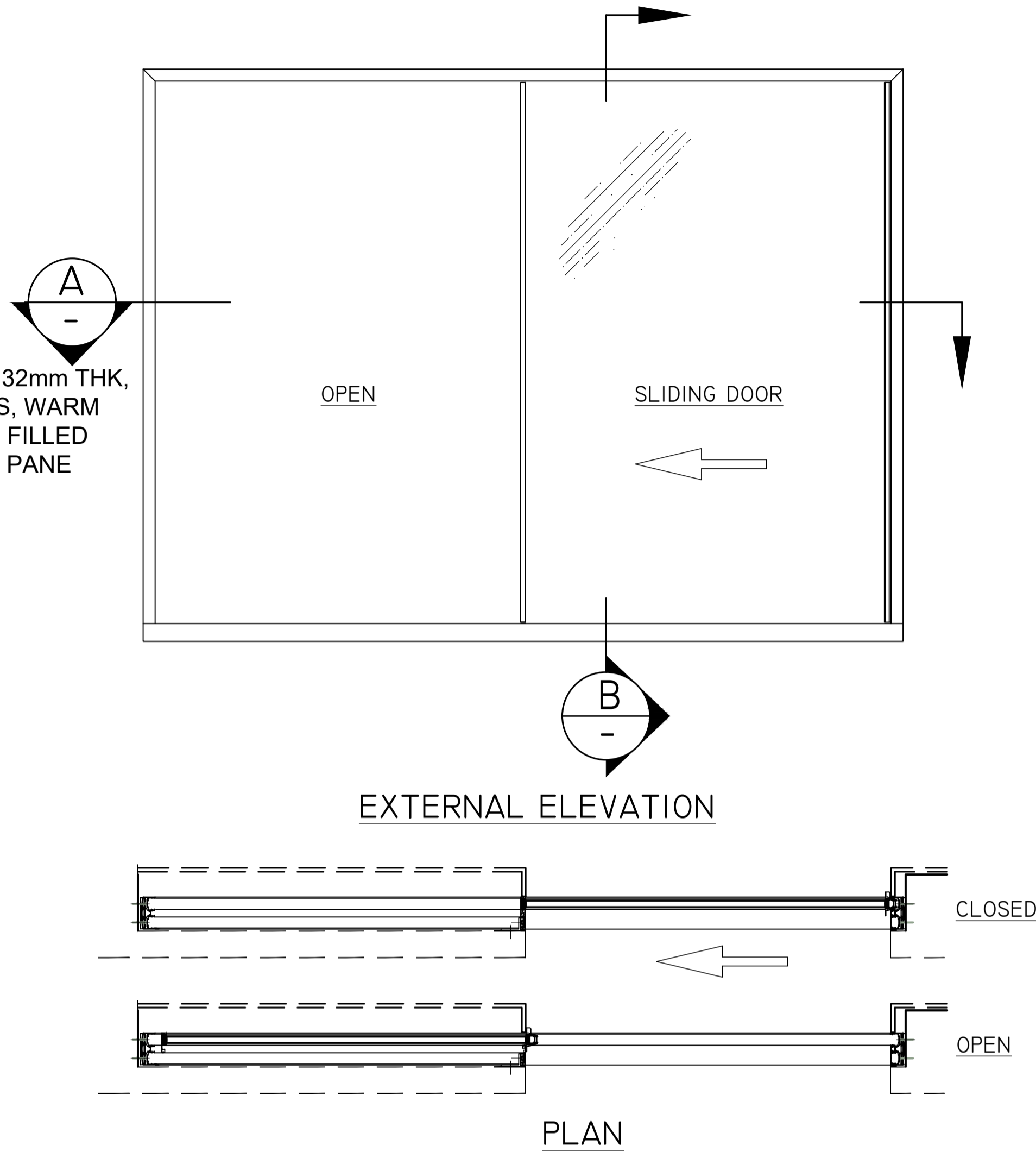
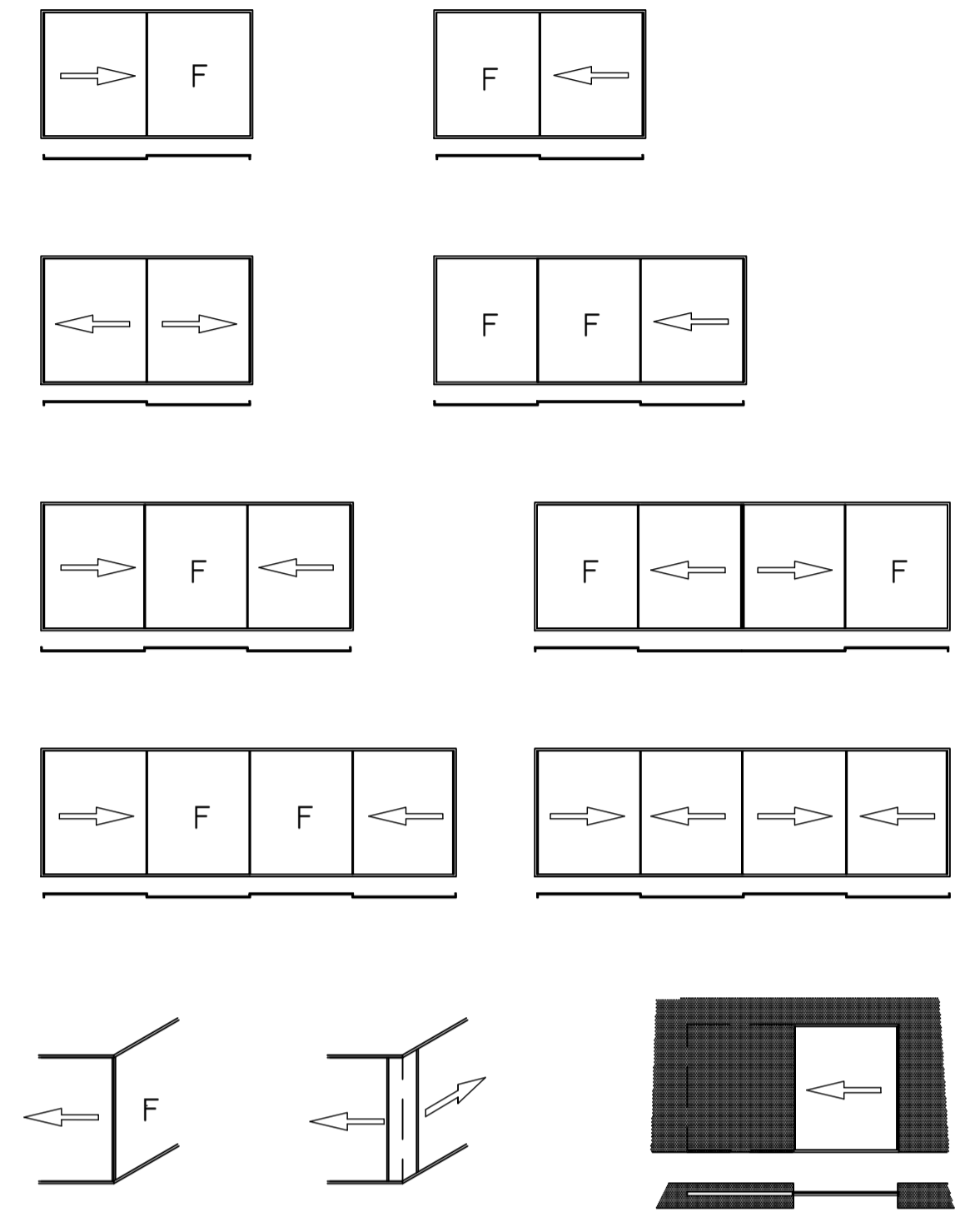


THE DOUBLE GLAZED UNITS ARE 32mm THK, INCORPORATE LOW 'E' COATINGS, WARM EDGE SPACER BARS AND ARGON FILLED CAVITIES TO ACHIEVE A CENTRE PANE 'U' VALUE OF 1.0W/m2K



SOME TWO TRACK CONFIGURATION OPTIONS



BASE PLATE IMAGE

PROJECT: TYPICAL DETAILS

DRAWING: SUNVISTA DOORS - 2 TRACK SINGLE POCKET DOOR

Sunvista
Minimally framed sliding door system

SCALE:	DATE: 30/3/26	DRAWN: MJB	CHECKED:
DRAWING No.			REVISION:

PLEASE REFER TO sunvista.co.uk/faq FOR FURTHER INFORMATION