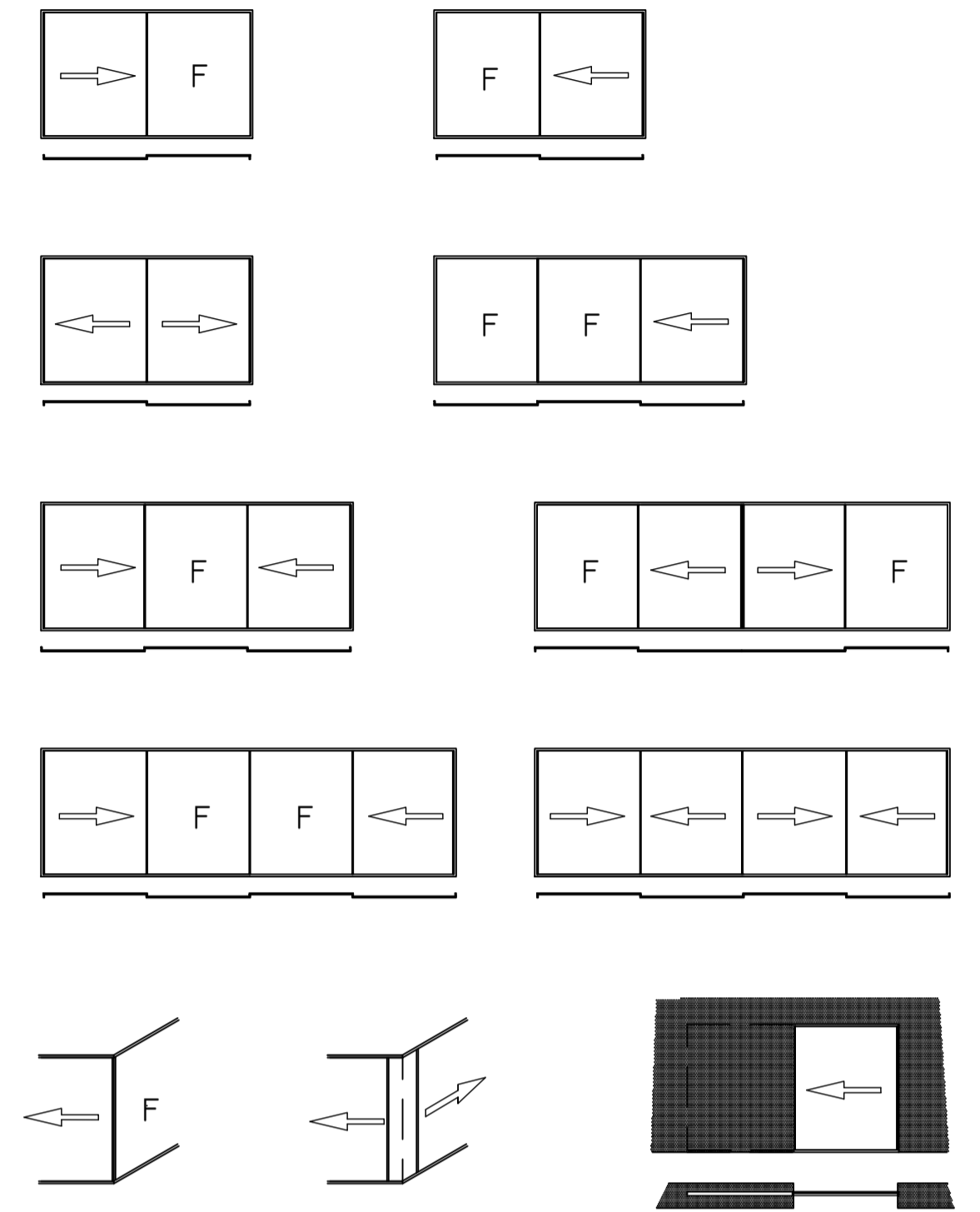


SOME TWO TRACK CONFIGURATION OPTIONS



BASE PLATE IMAGE

PROJECT:

TYPICAL DETAILS

DRAWING:

SUNVISTA DOORS - 2 TRACK
CORNER FIXED RETURN

Sunvista
Minimally framed sliding door system

SCALE:

DATE:

DRAWN:

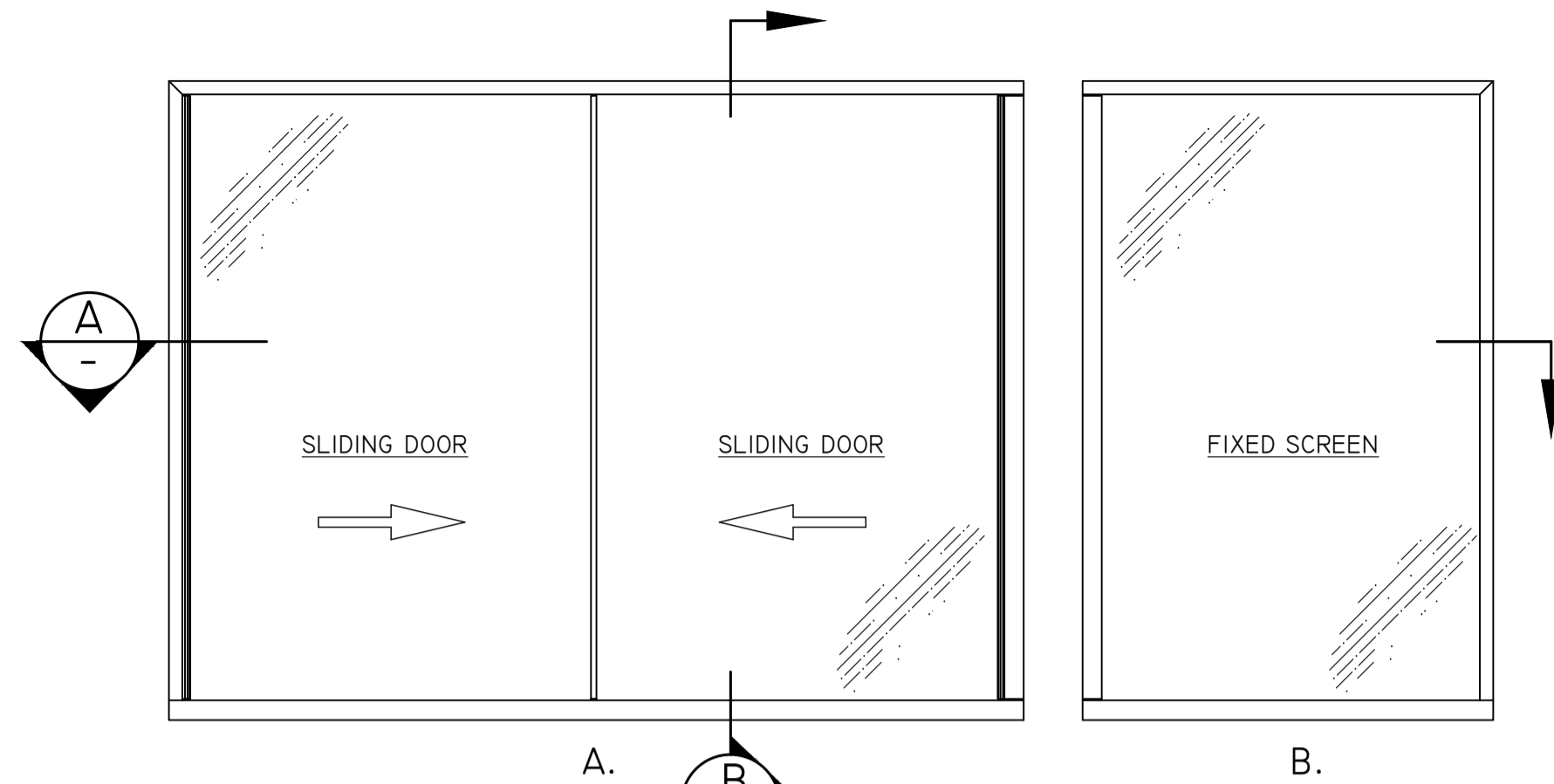
CHECKED:

30/3/26

MJB

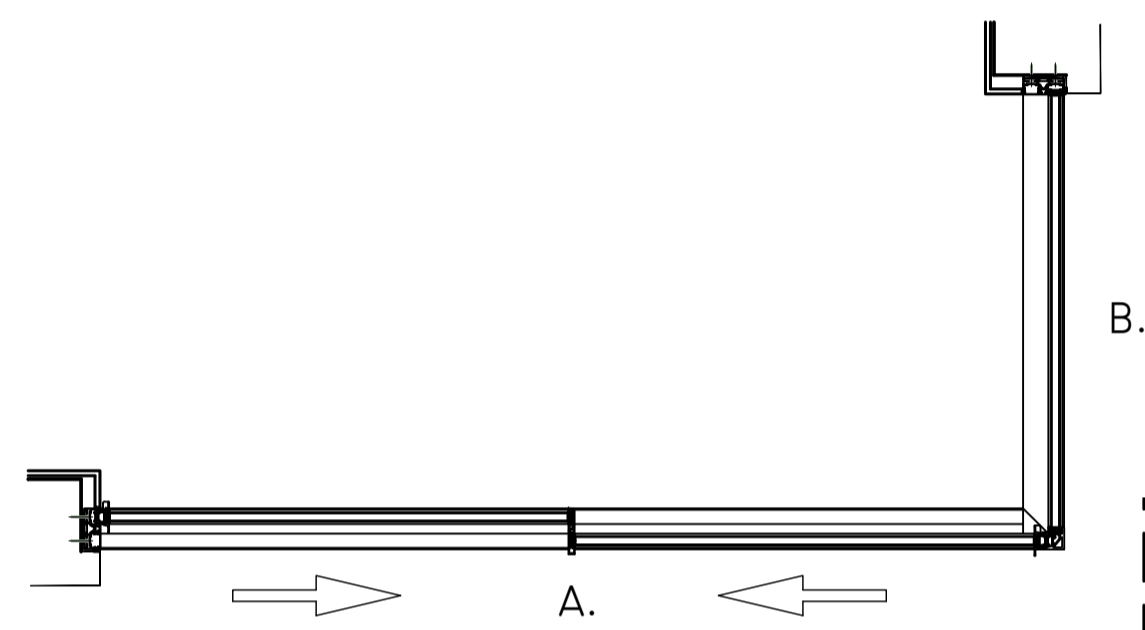
DRAWING No.

REVISION:

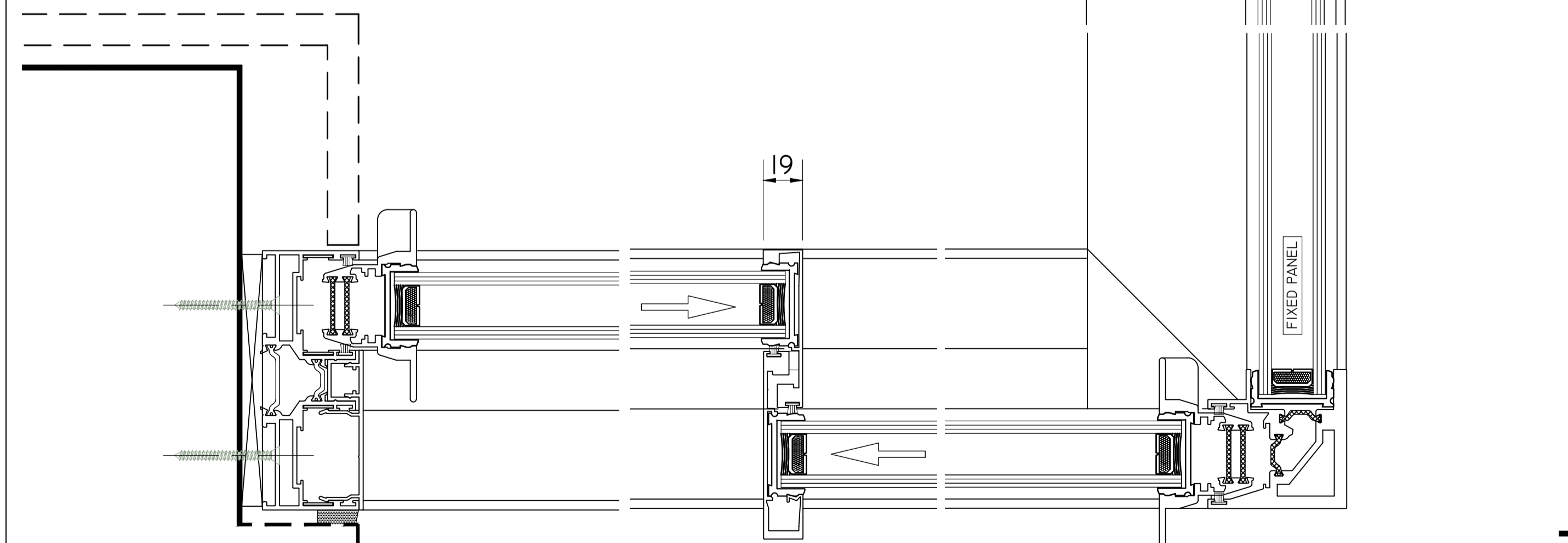


EXTERNAL ELEVATIONS

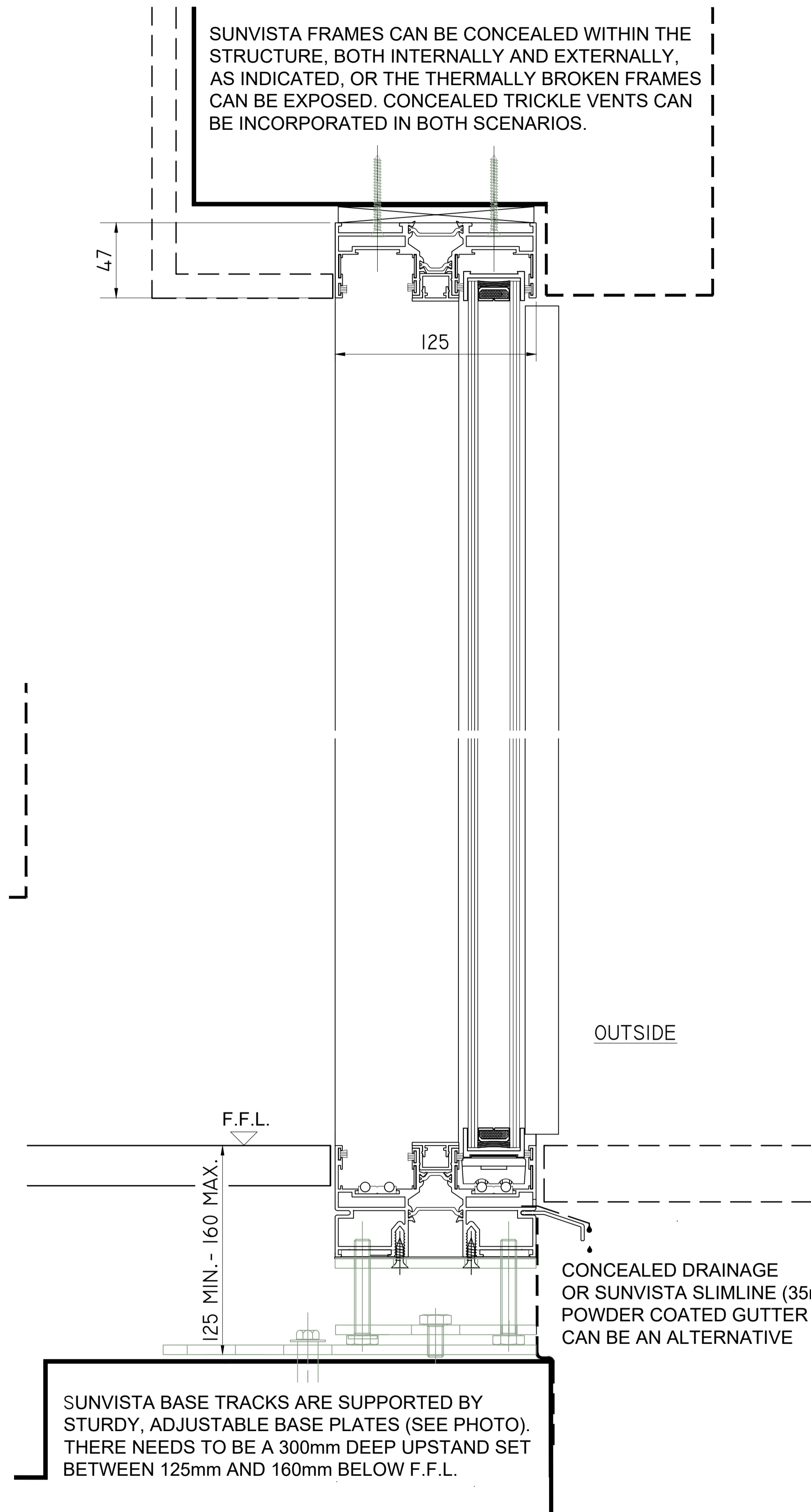
THE DOUBLE GLAZED UNITS ARE 32mm THK, INCORPORATE LOW 'E' COATINGS, WARM EDGE SPACER BARS AND ARGON FILLED CAVITIES TO ACHIEVE A CENTRE PANE 'U' VALUE OF 1.0W/m2K



PLAN



SECTION A.



SECTION B.

SUNVISTA BASE TRACKS ARE SUPPORTED BY STURDY, ADJUSTABLE BASE PLATES (SEE PHOTO). THERE NEEDS TO BE A 300mm DEEP UPSTAND SET BETWEEN 125mm AND 160mm BELOW F.F.L.

SUNVISTA FRAMES CAN BE CONCEALED WITHIN THE STRUCTURE, BOTH INTERNALLY AND EXTERNALLY, AS INDICATED, OR THE THERMALLY BROKEN FRAMES CAN BE EXPOSED. CONCEALED TRICKLE VENTS CAN BE INCORPORATED IN BOTH SCENARIOS.